





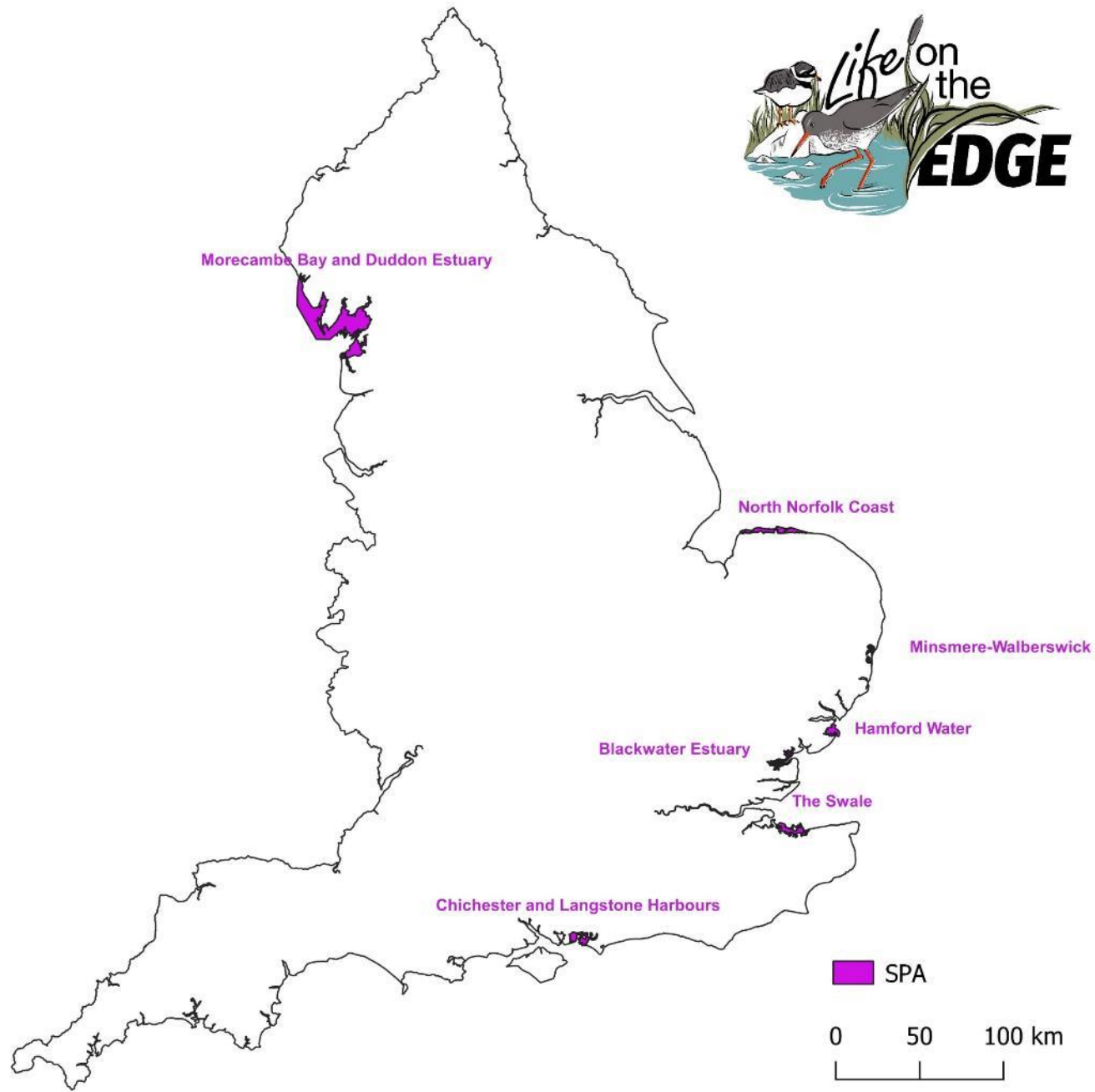
Project Aim

The low-lying coastlines support globally important numbers of breeding, migrating and wintering waterbirds. These birds and their habitats are protected within an extensive network of protected areas but are nevertheless under great and growing pressure. This is due partly to natural erosion and deposition, partly to climate change-induced sea-level rise, and partly to developmental and recreational impacts.

1. Increase the area and improve the quality of coastal habitats within the target protected areas.
2. Develop recommendations for wider scale and longer-term coastal habitats management/creation.
3. Strengthen links with practitioners elsewhere in north-west Europe.

Project Species





Project Sites



West Hayling LNR





Farlington Deep



Farlington Deep project site

Legend:

-  Shingle Islands
 Material removed to form islands
 Potential shingle shoreline areas (initial)
 Sea wall footprint

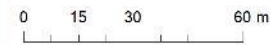
Acknowledgements & Notes:

© Crown Copyright. All rights reserved. ISBN 978 0 11 331 000 1 / 011 331 000 1
ISBN 978 0 11 331 000 1

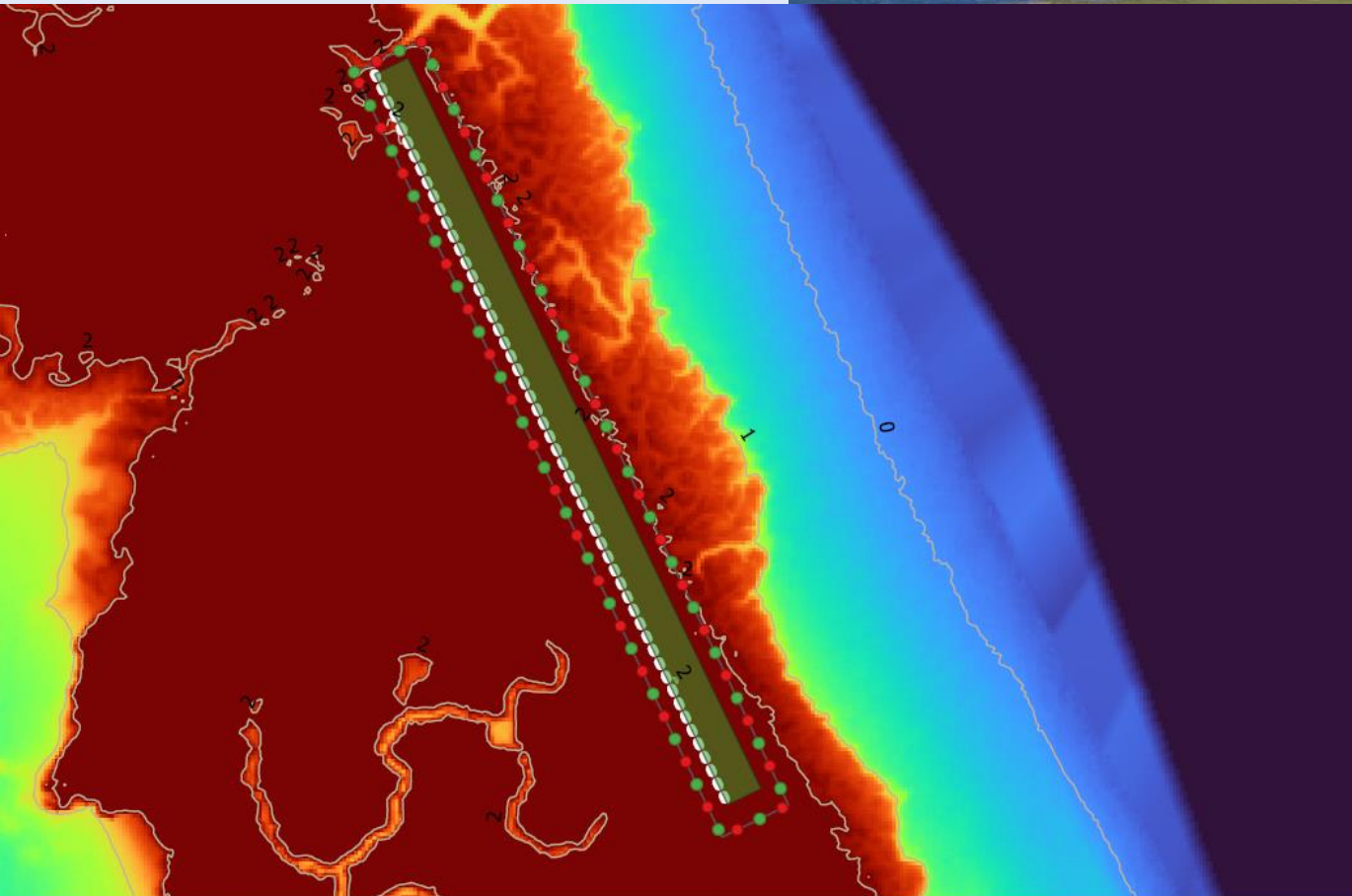


Map scale = 1:1,000

11 July 2019







Long island Shingle Recharge project

The map shows the proposed site for the shingle recharge project in Langstone Harbour.

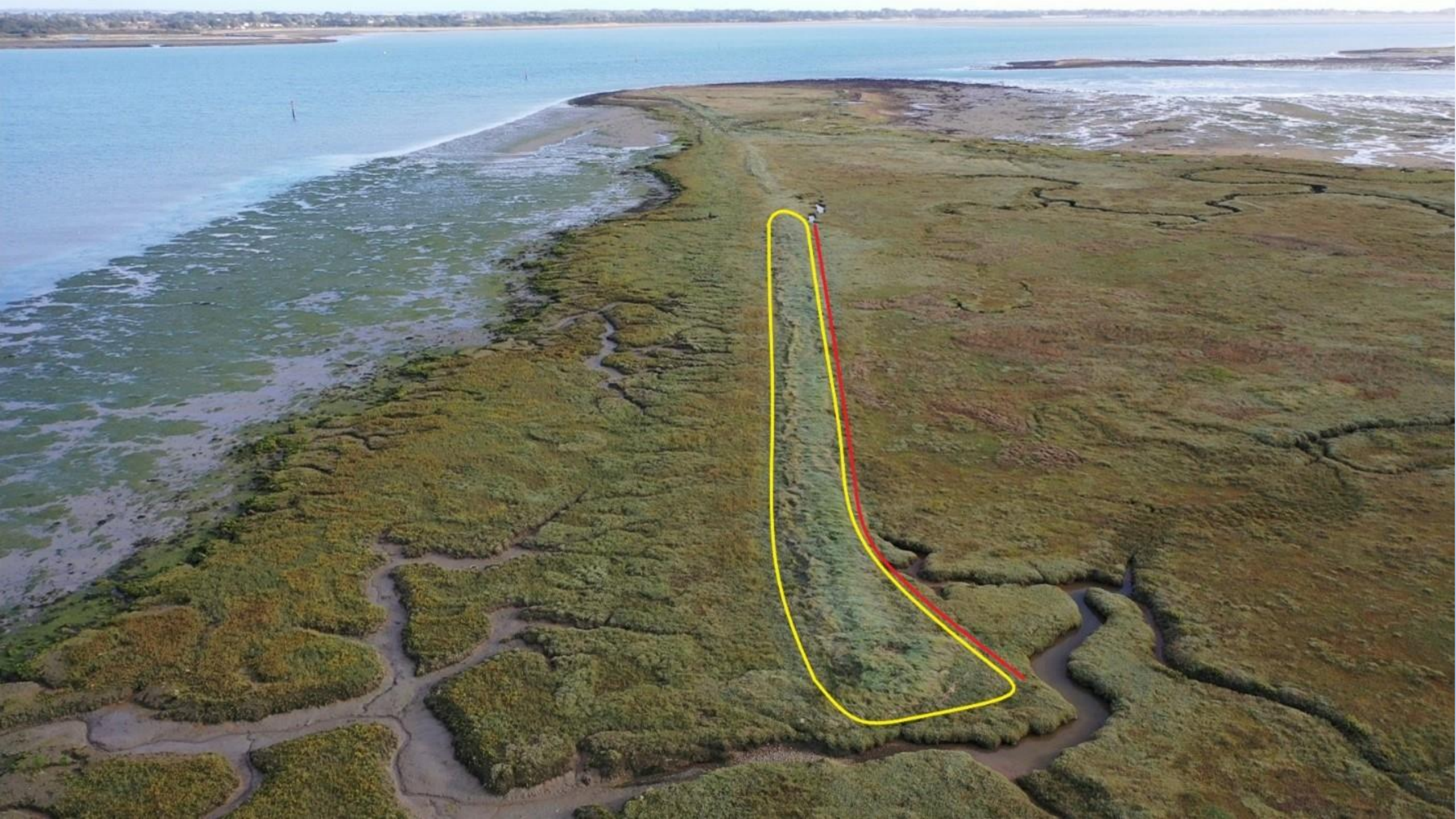
Drawings
 ●●● Predator fence
 ■ Shingle recharge
 ■ Brushwood



0 25 50 m



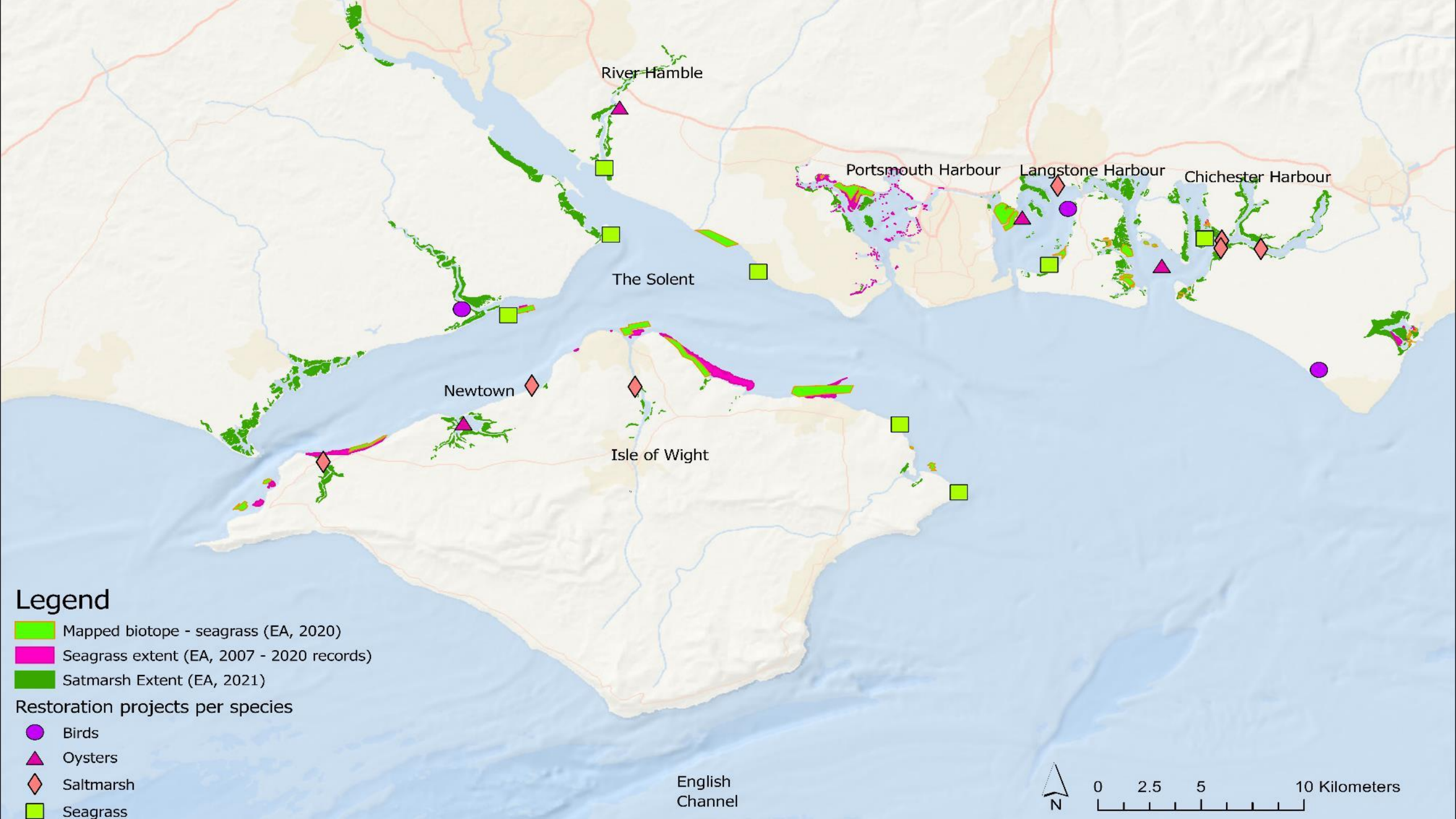
Long Island (Langstone Harbour)











SOLENT SEASCAPE PROJECT








Legend:

-  Predator exclusion fence options
-  Approximate area of existing shingle
-  Island One
-  Island Two
-  Island Three
-  Island Four

Acknowledgements & Notes:

Created by: RSPB

© Crown Copyright. All rights reserved. RSPB licence 100021787 © Crown Copyright, RSPB Permit Number: 60271.




N

Map scale = 1:2,607

Date printed: 05/04/2023

0 0.0425 0.085 0.17 km





Thank you

www.projectlote.life

@projectLOTE



Any
Questions?