

Sanderling Recovery Project

Overview

Ryde Sanderling

Need for Rescue & LNRS

Project Plan and Delivery

Next Steps

Questions

Ryde Sanderling

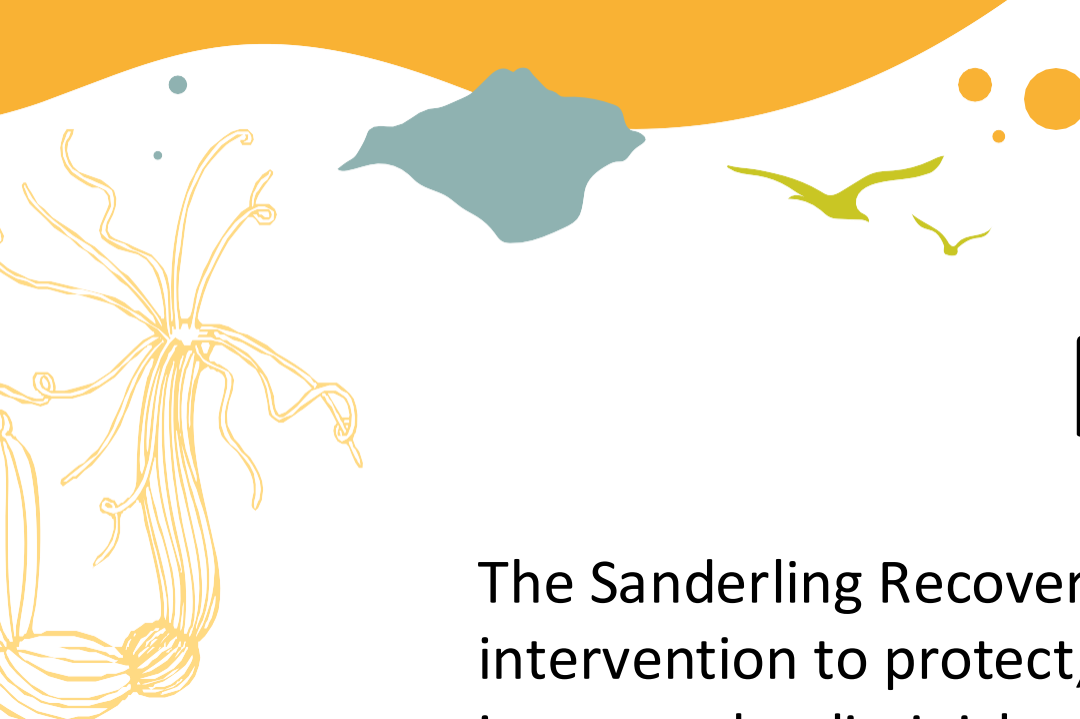
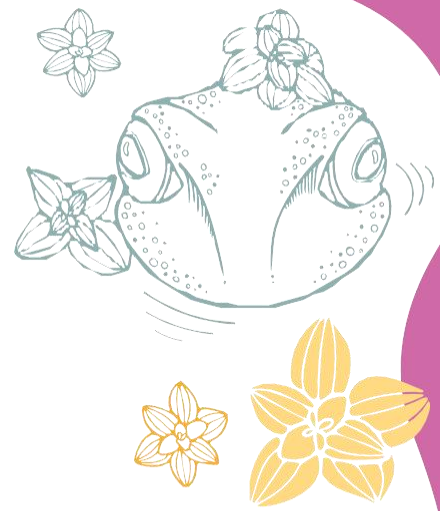
The Sanderling Recovery Project is an urgent intervention to protect, conserve and ultimately increase the diminished wintering Sanderling population on Ryde Sands SSSI, now restricted to a very few safe high tide roosts and widely impacted by intensifying patterns of local recreational disturbance.

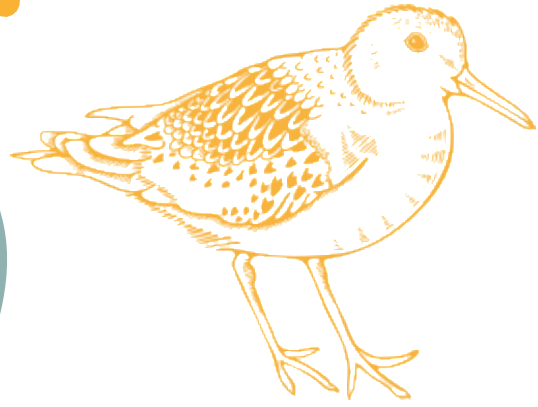
Sanderling return to UK coasts every autumn and winter from their Arctic breeding grounds in Siberia and Greenland. Ryde Sands is a well-established destination and an important component in the wider Solent population.

But this traditional winter flock is now under great stress, its peak counts have dramatically declined, and there are real fears that it may be lost altogether.



Sanderling and Ringed Plover at Ryde





The need for Sanderling Rescue

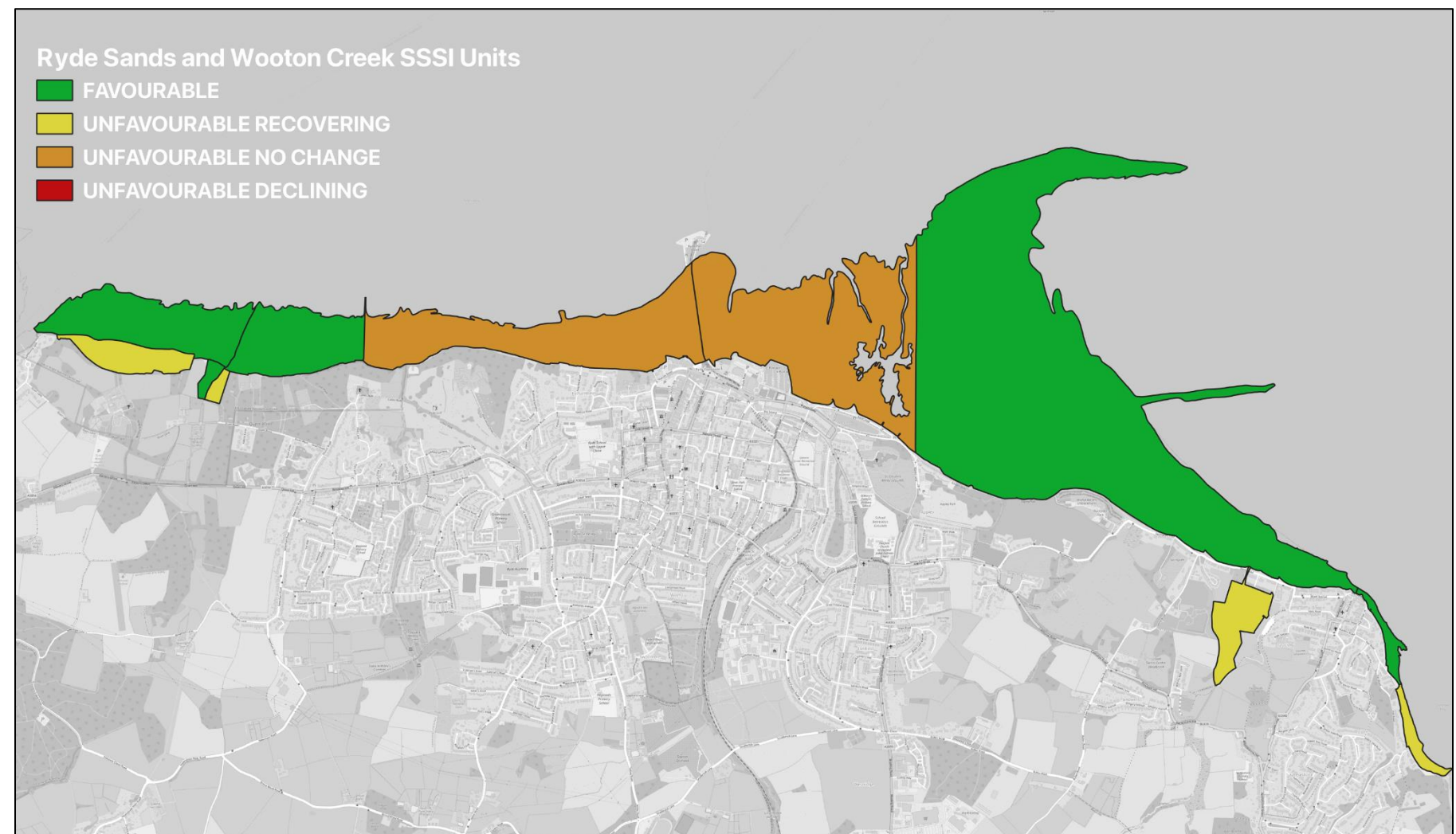


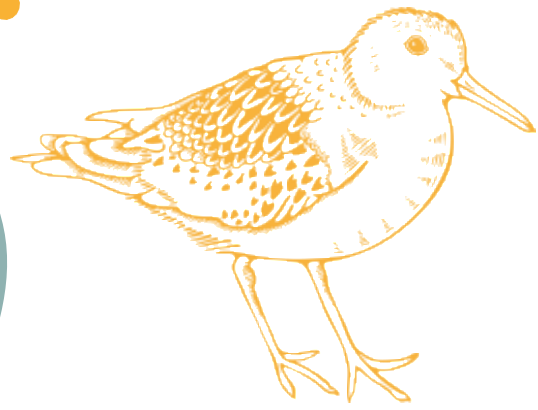
SSSI Condition

Declining populations

Increase in recreational disturbance

Long-term project ambition

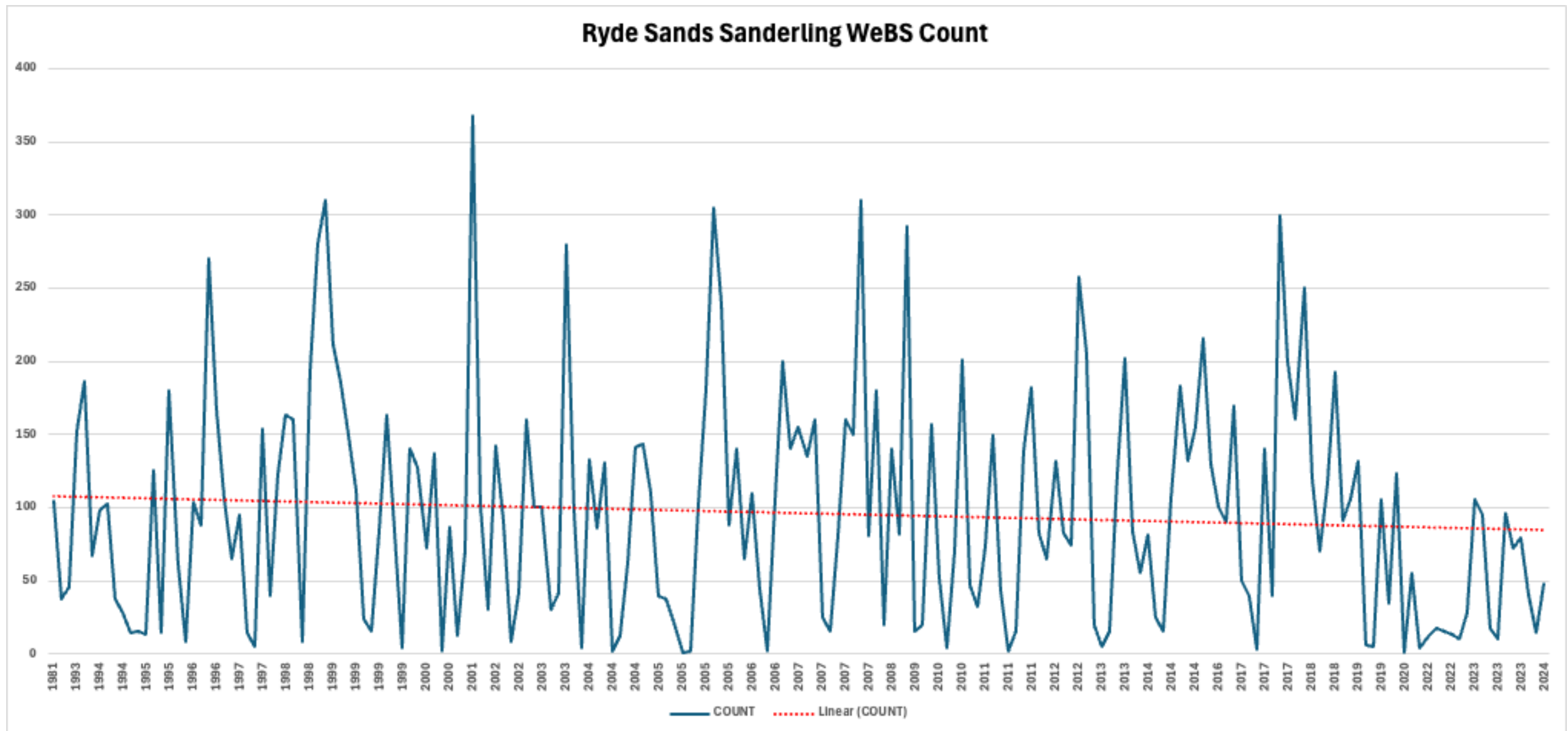


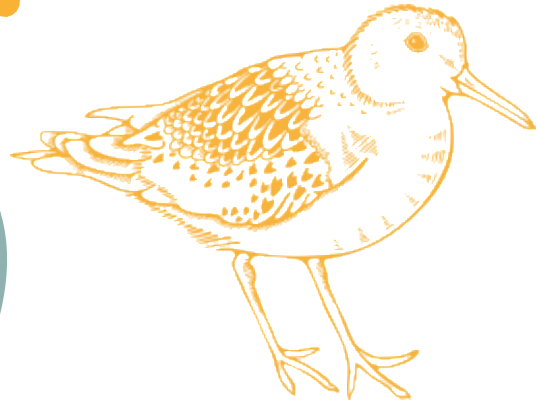


The need for Sanderling Rescue



Peak counts dropped by ~65% from historical highs – no counts above 120 after 2019
Low wintering counts becoming the norm
Average count fallen by more than half over past 25 years





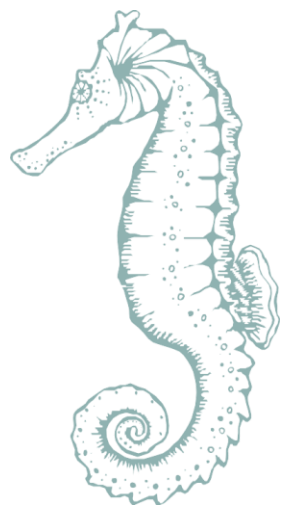
The Isle of Wight LNRS

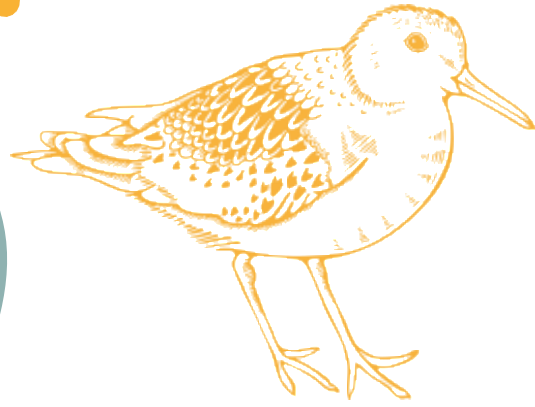


Local Nature Recovery Strategies are a product of the Environment Act 2021 and provide a statutory spatial plan for wildlife at the level of local authority administration.

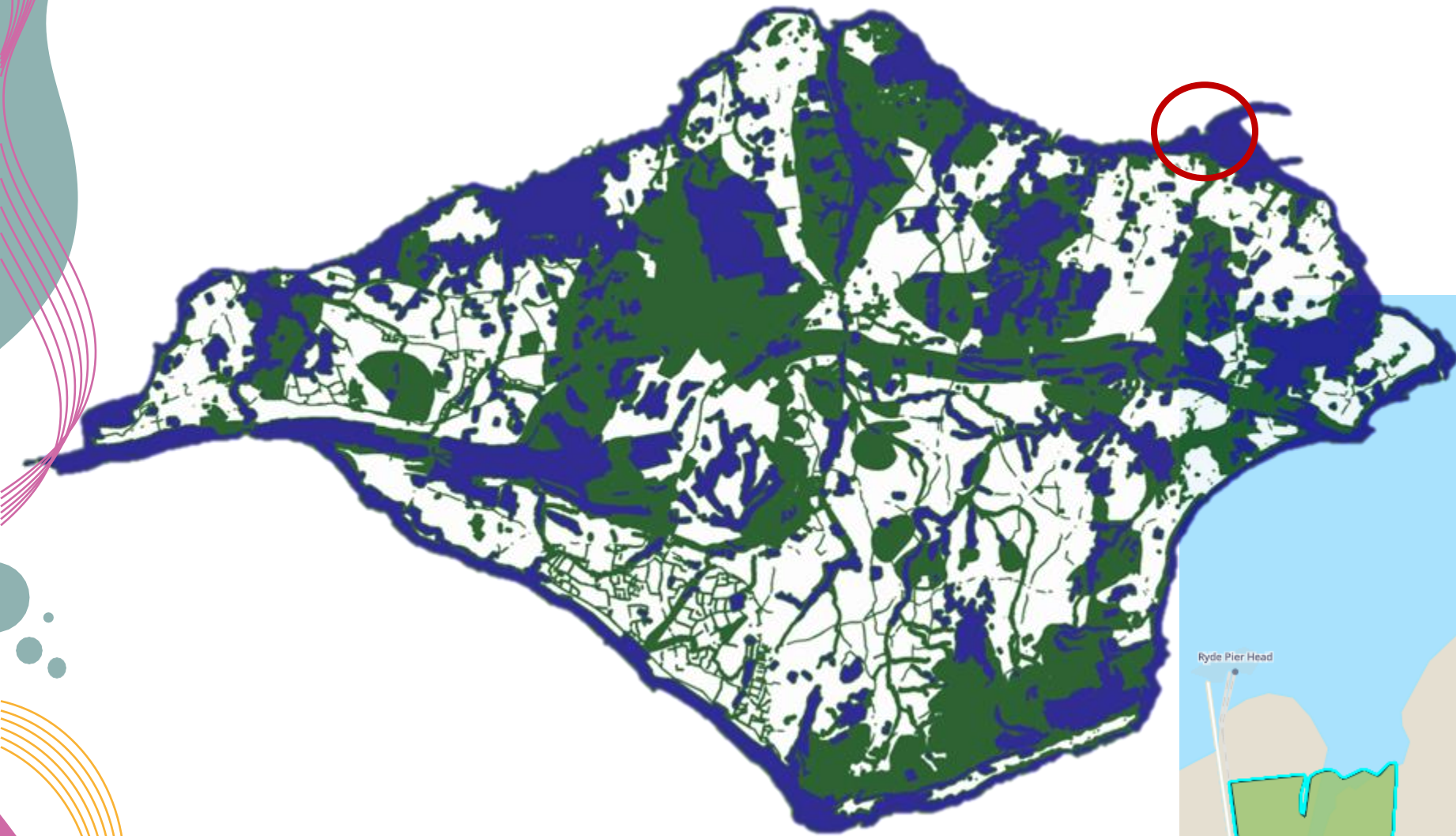
Public organisations across a wide spectrum all now fall under an Enhanced Duty to consider impacts on Biodiversity in their decision-making and in their operations. The LNRS is there to assist in this obligation.

The IW LNRS has identified priorities, actions and priority species – Sanderling recovery at Ryde being one





The Isle of Wight LNRS



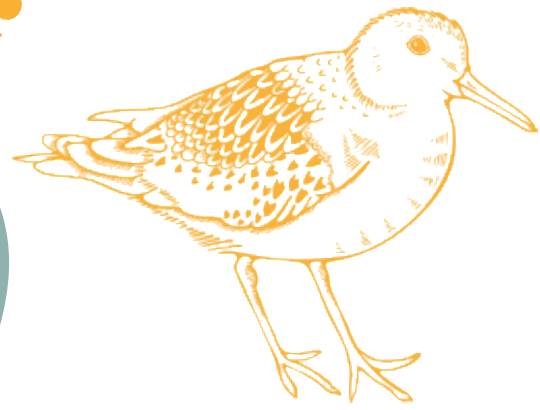
Species-specific roost and nest sites

Zoom to

Measure Information
Also viewable in IW LNRS Statement for Biodiversity: Part 2

Priority	Protect and conserve species vulnerable to recreational disturbance.
Measure	Protect, enhance and manage beach roosting and nesting sites.
Code	BSS1.2
Details	Permanently protect and extend Sanderling and Ringed Plover high tide roosts including building new roost structures within sea defences and associated coastal infrastructure on the urban coast. controlling public access.
Species	Beaches, Seafrosts and Seashores Assemblage Dunes, Shingle Assemblage Sandwich Tern Ringed Plover Sanderling
NEO	NEO1 NEO2





Sanderling Recovery Project



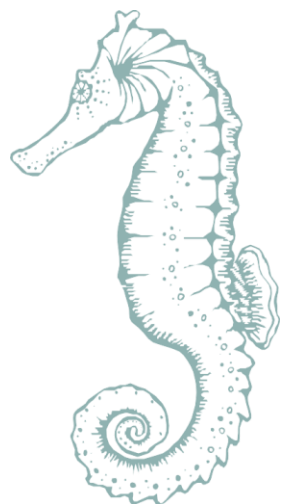
1. Partnership

2. Public engagement and education

3. Public access management

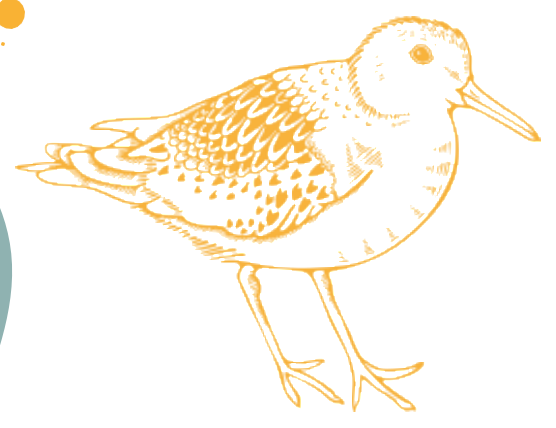
4. Monitoring and reporting

Funding from Natural England (CES) and Bird Aware Solent

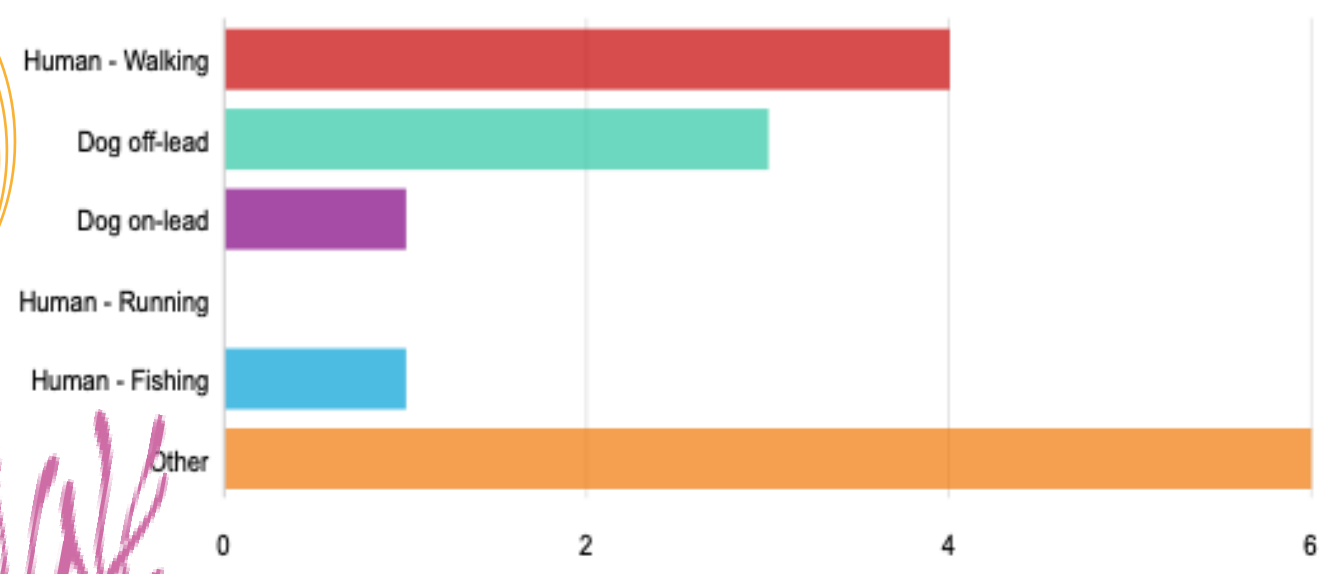




0 100 200 m



Sanderling Recovery Project: Delivery



Ryde Sands Bird Protection Area

The Ryde Sands Bird Protection Area has been created to provide a safe space for our coastal birds to feed and rest undisturbed.

Thanks to everyone for keeping out of the Ryde Sands Bird Protection Area between September to April. This helps the birds stay safe, giving them the best chance to thrive.

Curlew
Uses its long curved beak to dig for worms and crabs.

Dark-bellied brent goose
Migrates 3,000 miles to our shores from Siberia.

Oystercatcher
A loud piping call and carrot-like bill.

Sanderling
Migrates thousands of miles from Siberian Arctic and Greenland.

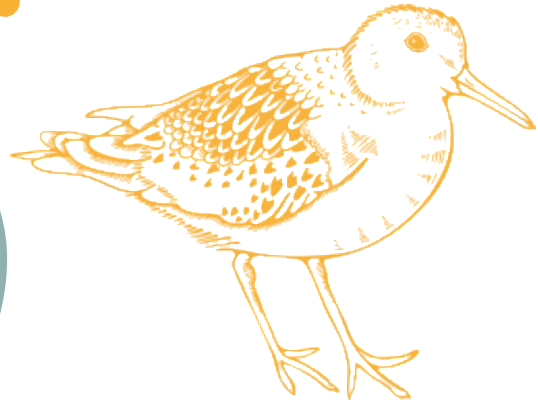
Turnstone
Turns over stones, pebbles and seaweed to look for food

Ringed plover
Has a black chest-band and an orange bill with a black tip.

Discover wildlife-friendly dog walking routes, as well as Coast and Country Canines' training tips and games:

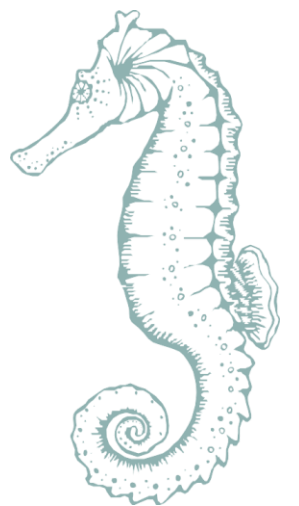
The Ryde Sands Bird Protection Area is dedicated in memory of local conservationist and wildlife supporter Jim Baldwin

www.birdaware.org/solent



Sanderling Recovery Project: Thinking Ahead

- 1. Disturbance Destinations – Wider Solent**
- 2. Public engagement – Sanderling Stories**
- 3. R&D – Supplementary Sites**
- 4. Population Monitoring**



Thank you!

