



UNIVERSITY OF  
PORTSMOUTH

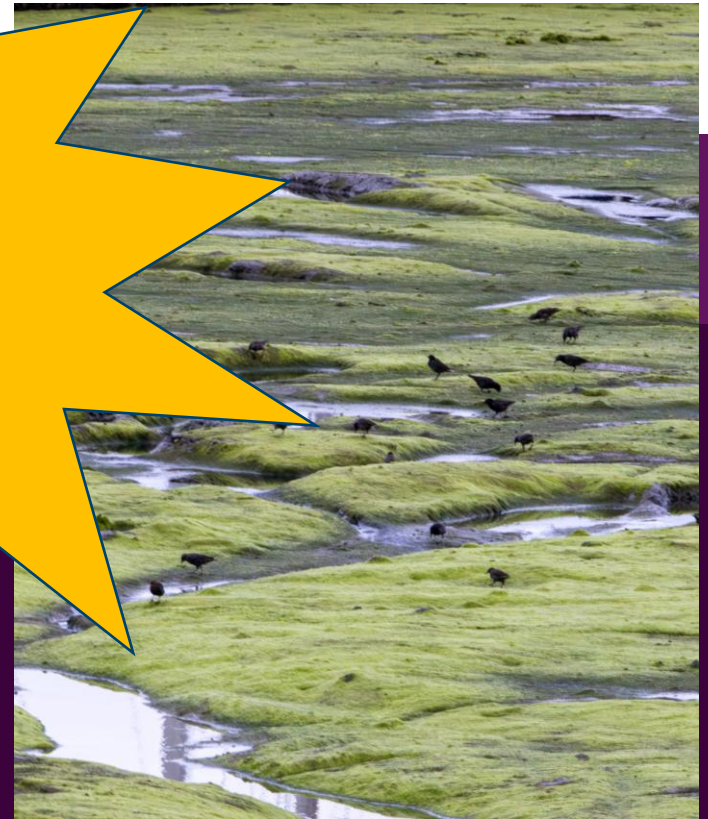


**UPDATE**

When is a wading bird?  
a wading bird? the European starling

Prof. Gordon Watson

RAs: Kristy Johnson & Cecilia Laverty



# The Scientific Approach



*"The most exciting phrase to hear in science, the one that heralds new discoveries, is not 'Eureka!' but 'That's funny...'"*

*Isaac Asimov*

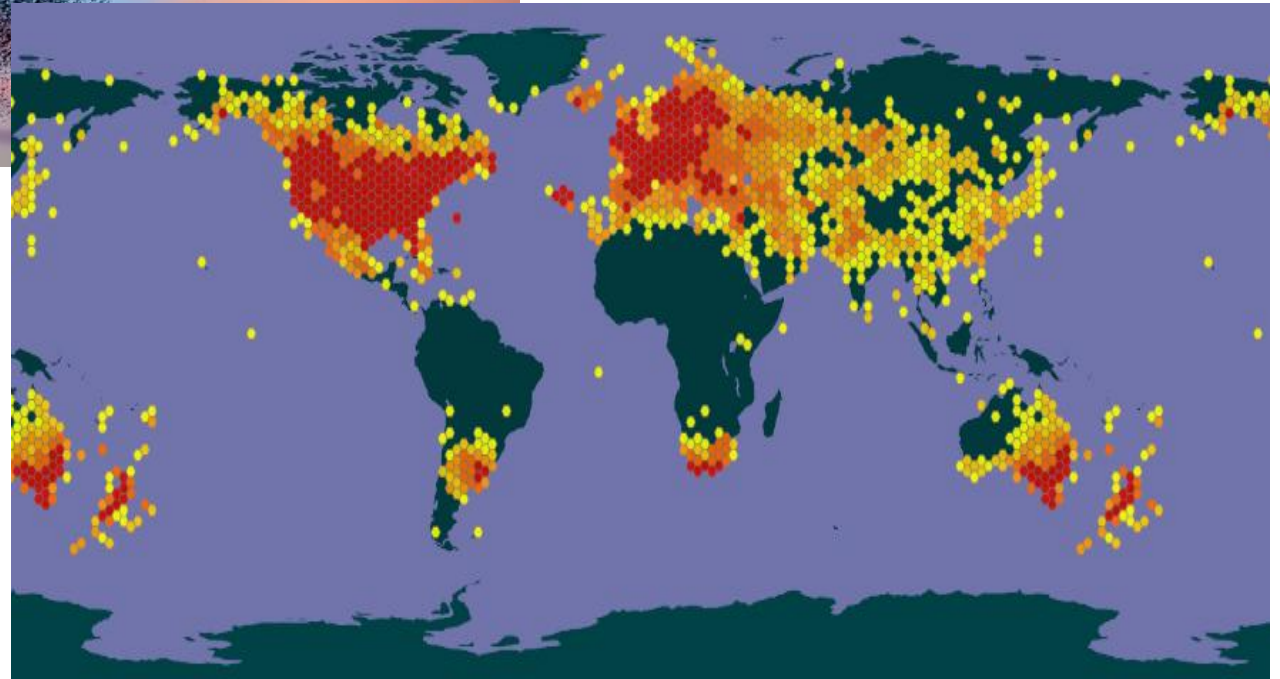
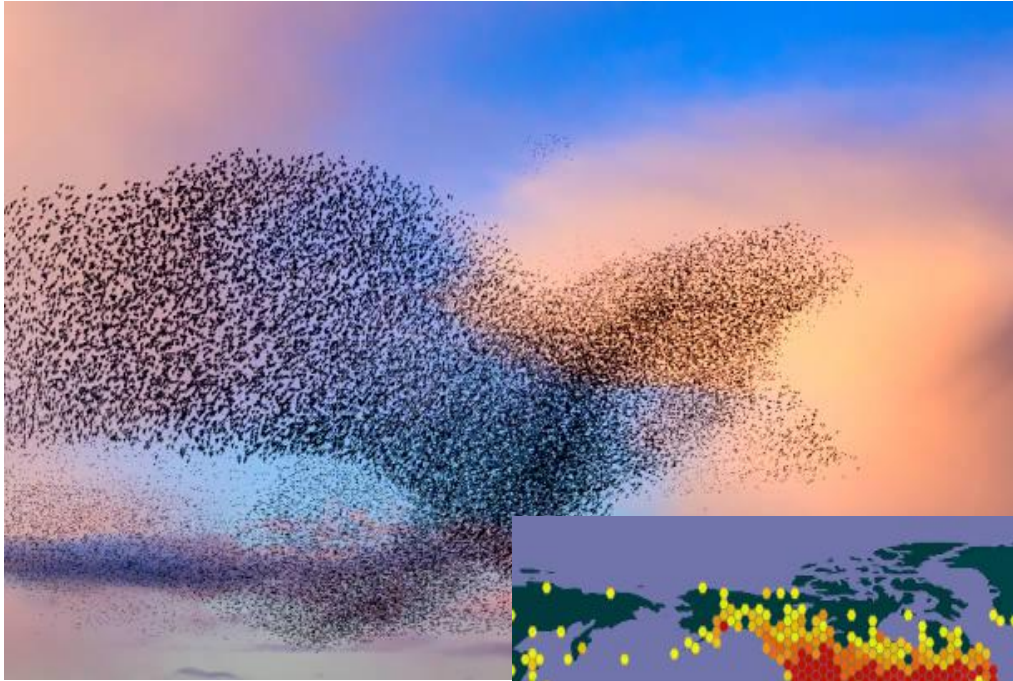
# My weird



# Background

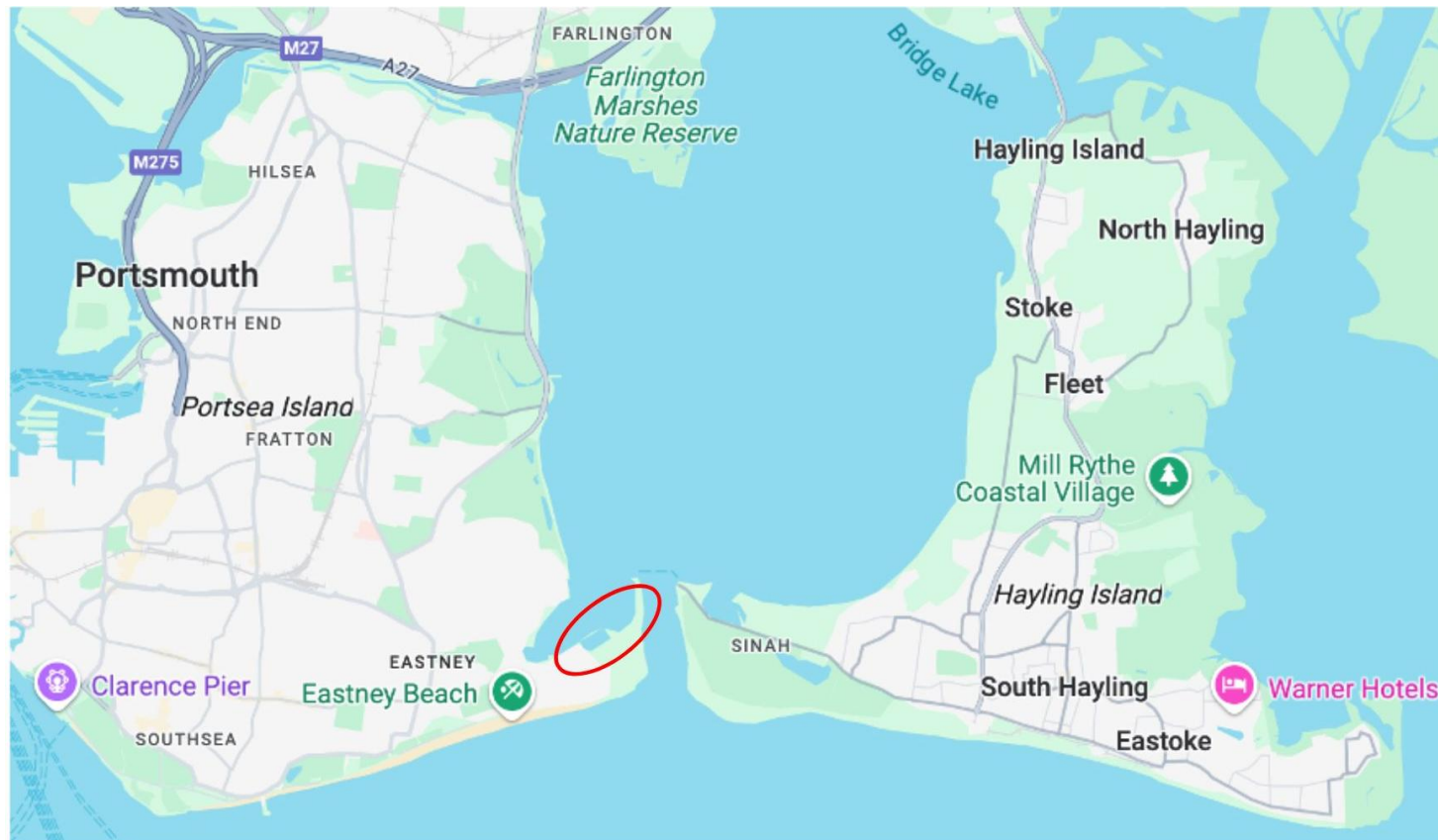


# Background



# Summary of Methods - Approach

**Research Location:** Intertidal mudflats west-side of the Institute of Marine Science Labs



# Summary of Methods - Approach



Laboratory C, Institute of Marine Sciences

# Summary of Methods - Approach



Camera A



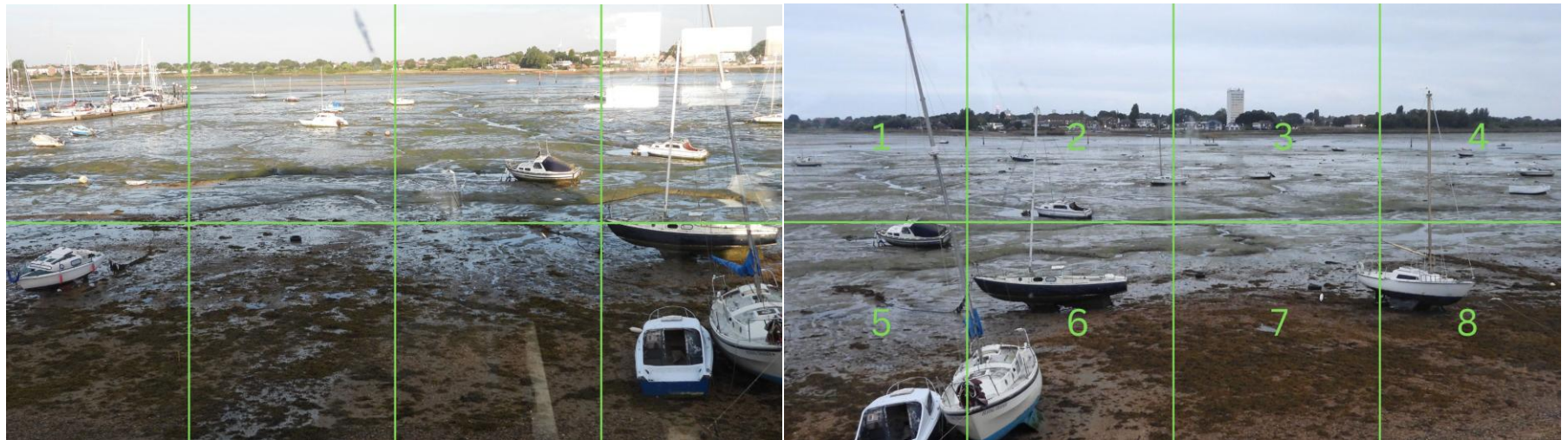
Camera B

# Methods – Data Processing

Over time period 31 July 2024 – 31 October 2024 – **total of 87,449**

Images manually reviewed and **refined**

Images put into daily **timelapse sequence videos**

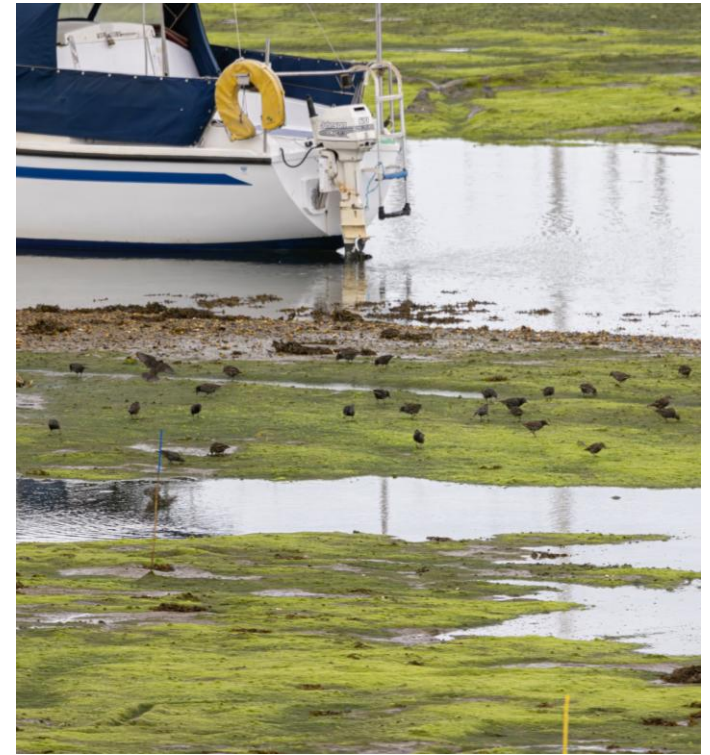


# Preliminary Results

Completed to September 2024

**Presence of starlings  
confirmed**

Feeding Behaviours Observed:



ings seen on intertidal mud flat

# Next Steps



# Next Steps



THE ZOOVERSE WORKS

**980,237,399**  
CLASSIFICATIONS SO FAR

**3,005,845**  
REGISTERED VOLUNTEERS

## About | Zooniverse

BRITISH ECOLOGICAL SOCIETY **Methods in Ecology and Evolution**

RESEARCH ARTICLE | Open Access | ©

### Essential tools but overlooked bias: Artificial intelligence and citizen science classification affect camera trap data

## scientific data

Explore content | About the journal | Publish with us

nature > scientific data > data descriptors > article

Data Descriptor | Open access | Published: 26 June 2018

### Time-lapse imagery and volunteer classifications from the Zooniverse Penguin Watch project

Figure 1: Two examples of remote camera structures.

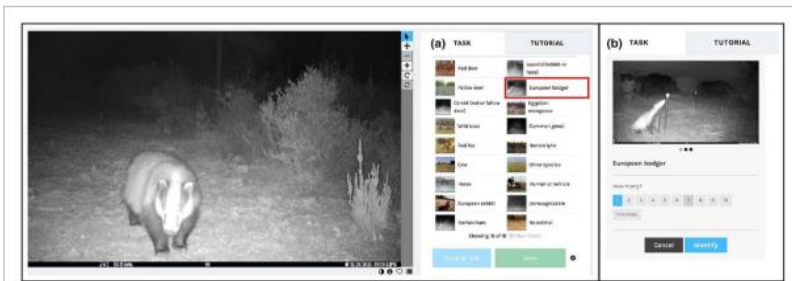
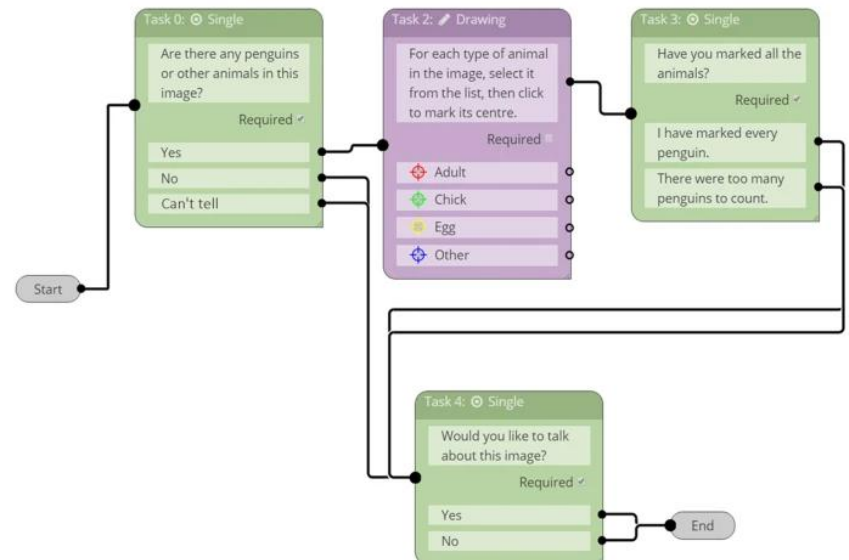


FIGURE 2 Open in figure viewer | PowerPoint

Citizen science project interface for image classification. (a) Volunteers were first asked to recognise one among the 18 possible classes: 12 mammal species, two mammal families (Cervidae and Leporidae), human or vehicle, unrecognisable, other species and no animal (i.e. 'empty'). (b) Next, if a mammal class was selected, they were asked to indicate how many individuals they saw.

Figure 2: The Penguin Watch volunteer work flow.



# Next Steps

## HOW IT WORKS People-powered research

### As a participant:



Find a project that interests you



Learn the process of classifying that project



Submit your classification and help with real research!



Generate an official certificate verifying your efforts on the platform

Explore projects



Adler  
PLANETARIUM



UNIVERSITY  
OF MINNESOTA



UNIVERSITY OF  
OXFORD

### As a researcher:



Build your project using the Zooniverse Project Builder



Submit your project for approval



Launch your project and engage with volunteers on Talk while the classifications come in



Download your data and publish your results!

Build a project

# Next Steps

	Month					
Tasks	M	A	M	J	J	A
Meet Zooniverse	■					
Prep Images		■	■			
Build project			■	■		
Internal testing				■	■	
B-testing					■	
Full Launch					■	■



**UNIVERSITY OF  
PORTSMOUTH**

# Acknowledgements